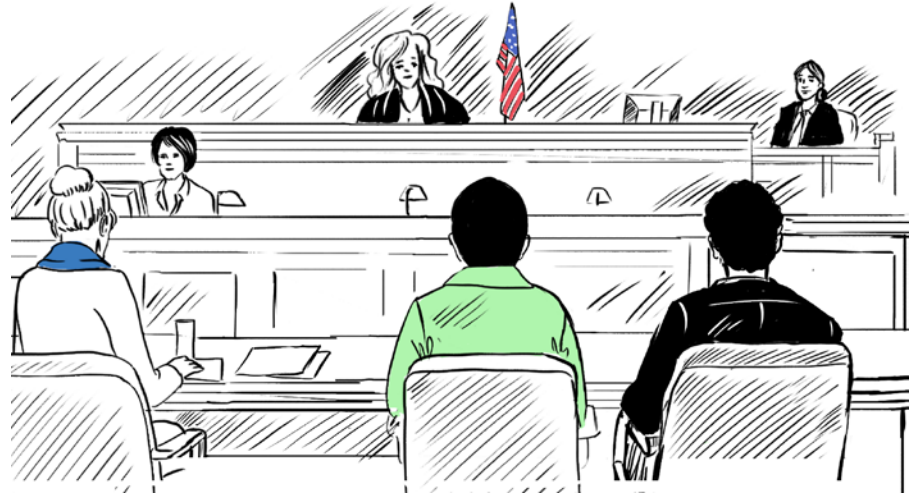


AMATEGEKO YA LETA ZUNZE UBUMWE ZA AMERIKA – UBURENGANZIRA N'INSHINGANO

Muri Leta Zunze Ubumwe za Amerika, amategeko arengera uburenganzira bw'abantu bose. Ugomba kumenya no gukurikiza amategeko. Ugomba kumenya ibishobora kukubaho uramutse urenze ku mategeko.

Kurenga ku mategeko bishobora guhanishwa ihazabu cyangwa gufungwa kandi bikagira ingaruka kuri sitati yawe y'ubuhunzi. Ushobora no koherezwa mu gihugu wavuyemwo.



UBURENGANZIRA BUNE BW'IBANZE UGOMBA KUMENYA:

1 Ufite uburenganzira bw'ikiremwa muntu, nk'ubwisanzure bwo kuvuga no gusenga.



2 Ufite uburenganzira bwo gukora. Nta muntu n'umwe ushobora kwitwaza ubwoko bwawe, idini ryawe, igitsina, n'inkomoko y'igihugu cyawe kugira ngo akwime akazi.



3 Abana bose bari muni y'imyaka 18 bafite uburenganzira bwo kugira umutekano no kurindwa ikintu cyose cyabahungabanya.



4 Niba ukorewe icyaha, ufite uburenganzira bwo kuregera inkiko. Kugira ngo utange amakuru y'ubugizi bwa nabi, hamagara polisi. Niba byihutirwa, hamagara 911.

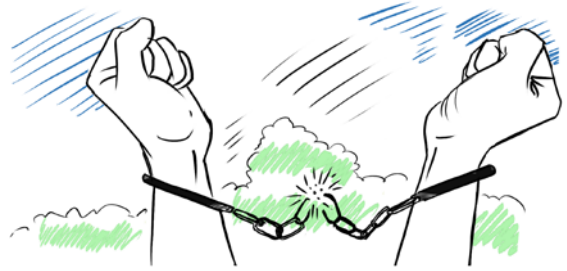


INSHINGANO ENYE Z'INGENZI ZO KUBAHIRIZA:

- 1 Birabujijwe kugirira nabi undi muntu, harimo n'abagize umuryango wawe. Ibibi bishobora kubamo gutotezwa, ihohoterwa rishingiye ku gitsina, n'ihohoterwa rikorerwa mu miryango.



- 2 Birabujijwe guhatira umuntu gukora ibyo adashaka. Ntawe ushobora kuguhatira gushyingirwa cyangwa kuguhatira gukora udahembwa.



- 3 Birabujijwe guhohotera abana cyangwa gusiga abana nta muntu mukuru ukureberera.



- 4 Birabujijwe kugura, kugurisha, cyangwa gukoresha ibiyobyabwenge bimwe na bimwe, nka heroyine na kokayine.



ANDI MATEGEKO ABIRI Y'INGENZI UGOMBA KUMENYA:

- 1 Ugomba kuba ufite imyaka 21 kugira ngo ugure cyangwa unywe inzoga.



- 2 Kugira ngo utware imodoka; ugomba kuba ufite icyemezo/uruhushya rwo gutwara imodoka.



Ugomba kandi kumenya ibyerekeye amategeko ya leta n'ay'inzego z'ibanze. Muri yo harimo amategeko ajyanye no kunywera itabi ahantu rusange, imiturire, kuroba no guhiga nta ruhushya.

Zirikana: Muri Leta Zunze Ubumwe za Amerika hari amategeko menshi. Kutamenya amategeko ntibikuraho guhanwa uramutse uyarenzeho.

Cultural Orientation Resource Exchange

8719 Colesville Road, 3rd Floor • Silver Spring, MD 20910

For more information, visit the CORE Resettlement Navigator website at settlein.us.org.



The contents of this fact sheet were developed under an agreement financed by the Bureau of Population, Refugees, and Migration, United States Department of State, but do not necessarily represent the policy of that agency and should not assume endorsement by the Federal Government. **This material is in the public domain and may be reproduced.**